



**fight
for natural
beauty**

Cutting edge technology
MOBILIFT M6®

LPG Face Endermologie Treatments

An Amazing Treatment has arrived



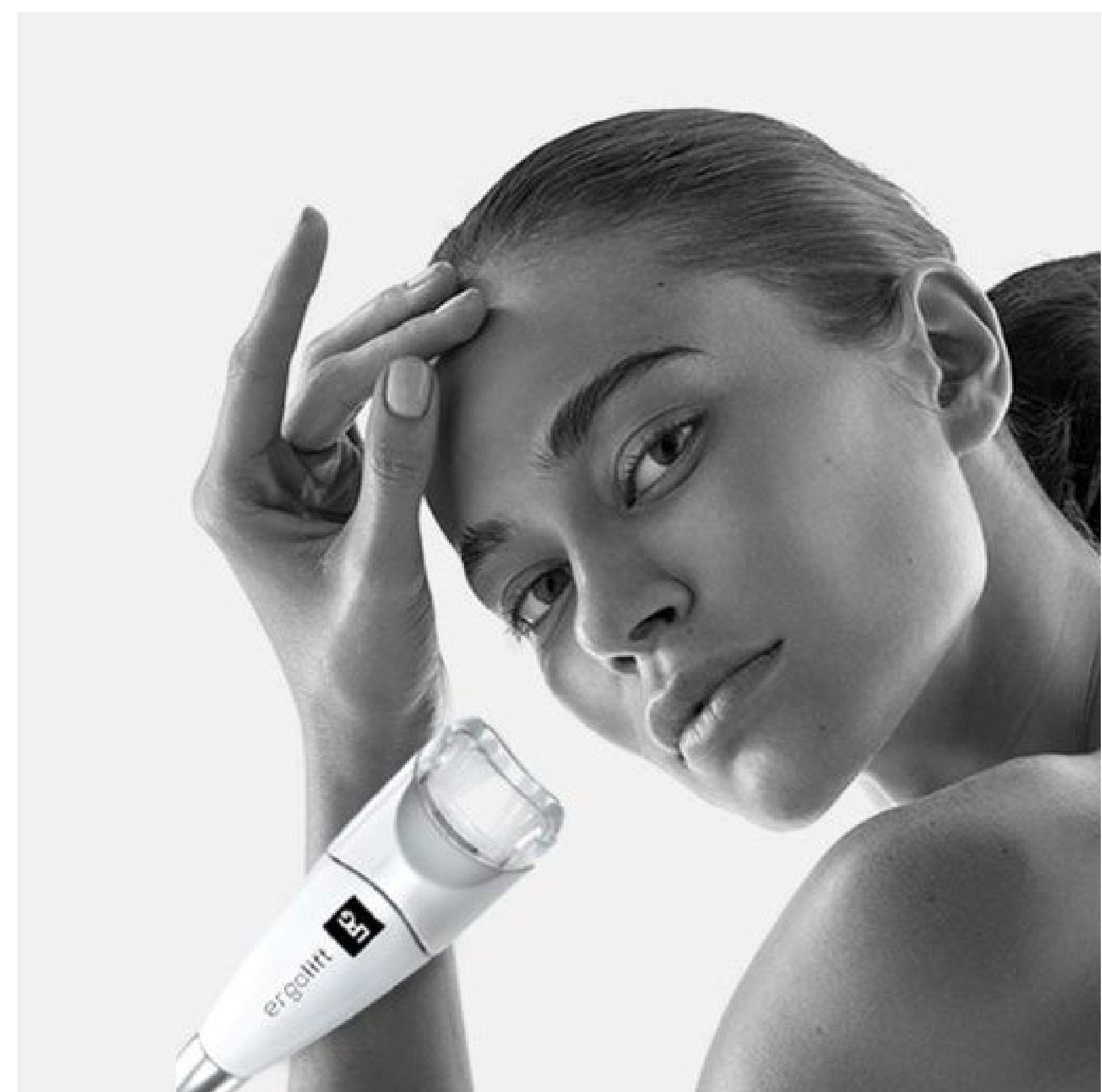
Visible results from the first session

Endermologie, the 100% natural, non invasive, non-aggressive mechanical skin stimulation technique that reactivates cells' processes.



Smooth wrinkles

Skin begins to sag and lose its density, creating wrinkles and furrows, mostly on the face, neck, décolleté, and hands. Other external factors, such as sun, stress, tobacco, or even pollution, can accelerate the appearance of wrinkles.



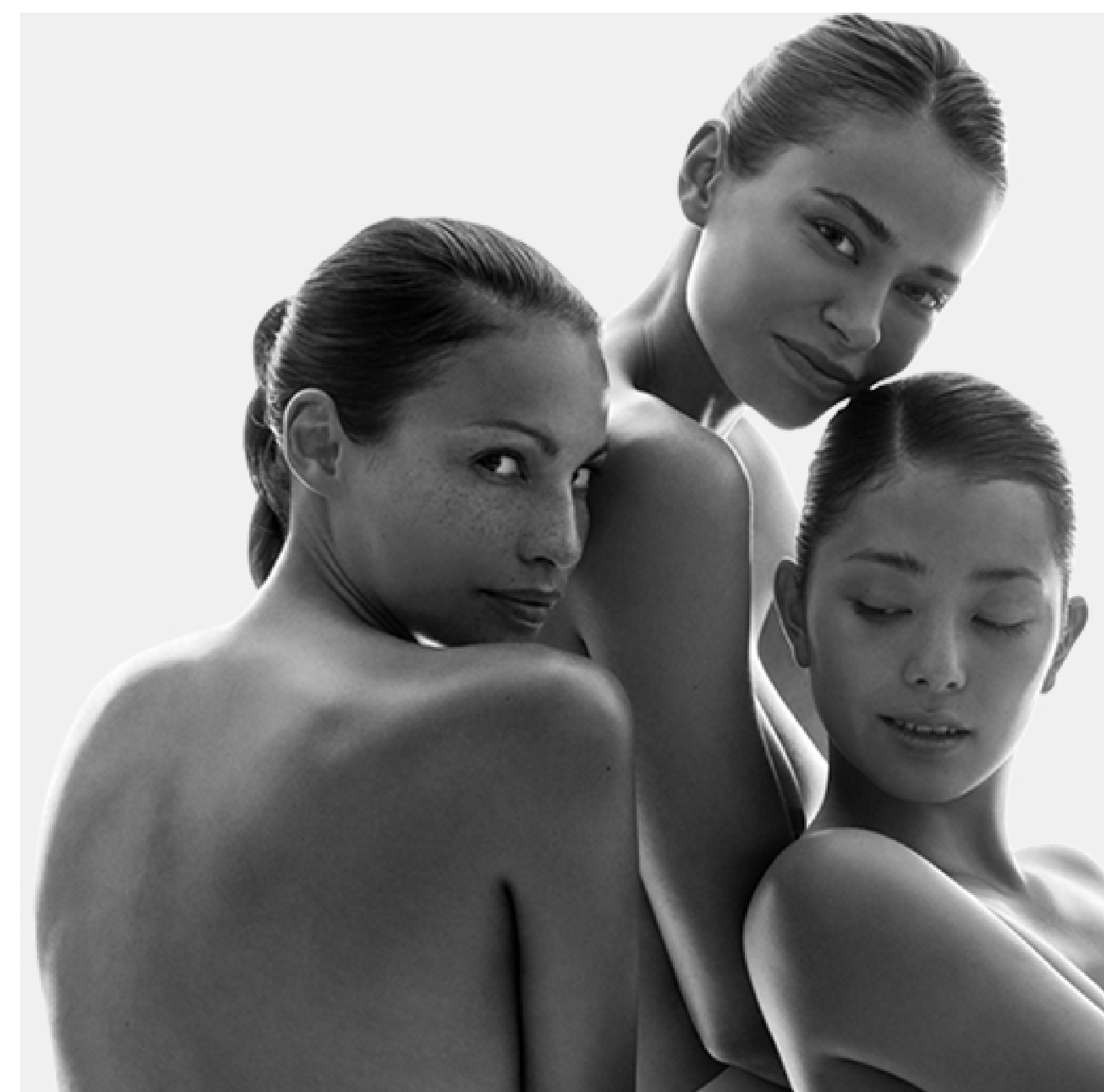
Firm the skin

The skin loses firmness and tonicity, the nasolabial folds (laugh lines) become deeper, and the eyelids become droopy. The skin gradually distends, leading to a general sagging of the face.



Clarify the complexion

Stress, pollution, lack of sleep, and tobacco use are also factors that darken skin: venous and lymphatic microcirculation slows, and toxins build up. Skin then loses its radiance and the complexion becomes dull.



Well-being

Discover exclusive treatment that offers unparalleled efficiency and relaxation.



**fight
for natural
beauty**

Cutting edge technology
MOBILIFT M6®

Superior Technology

0 risk. 0 side effects. Always results.

Intelligently stimulated, the skin is capable of undergoing amazing transformations: boosting the production of rejuvenating substances (collagen, elastin, hyaluronic acid) for firmer skin, activating fat cells' elimination process to reshape your figure, stimulating

fluid exchanges for a deep detox effect.

Our endermologie® technique was developed to make the most of this natural potential in a completely non-invasive, non-aggressive, pleasurable, and safe way. We are convinced that a healthy and respected skin is the key to a beautiful figure and radiant, youthful skin.





**fight
for natural
beauty**

Cutting edge technology
MOBILIFT M6®

Treatment List

endermologie classic

Skin Toning & Firming (30 minutes)

Restores the skin's suppleness and elasticity for a genuine natural lifting effect.

Replumping (30 minutes)

Harmonizes the volumes of the face, restores skin density while filling out wrinkles and fine lines from within.

Resculpting (30 minutes)

Slims the face and the double chin while firming the skin to redefine the face's contours.

Fluid Mobilization (20 minutes)

Drains toxins and "reoxygenates" the skin for a purified and radiant complexion.

Total Eye (20 minutes)

Smooths wrinkles around the eyes, lifts the eyelids to enhance the look overall condition of the skin around the eyes.

Eye & Lips (15 minutes)

Smooths wrinkles around the eyes and mouth, lifts the eyelids to enhance the look and replumps the lips.

Glow (15 minutes)

Gently exfoliates, reactivates the microcirculation to even out the complexion and improves skin Brightness.

Specific Area add-on (10 minutes)

Add an extra endomologie treatment to your specific area of concerns. Please choose one : Forehead, Eye wrinkles, Eye circles & Puffs, Jaw Line, Mouth area, Double Chin, Neck and Hand.

Special Price when combine with any facial treatments

Add On 30 mins LPG / 600 THB

Add On 50 mins LPG / 1,000 THB

30 mins / 800 THB

50 mins / 1,200 THB

All Inclusive of taxes



**fight
for natural
beauty**

Cutting edge technology
MOBILIFT M6®

Facial Treatment List

a la carte

[comfort zone]

SKIN SCIENCE SOUL

Sublime Deluxe Lift 120 minutes / 4,900 thb

Smooths the skin whilst stimulating the epidermal cellular renewal. Stimulates a triple action of immediate lifting, redensifying the face's oval.

Nourishes, illuminates and tones and attenuates deep wrinkles as well as fine lines.

Sublime Active Lift 90 minutes / 3,700 thb

Nourishes and tones. Smoothen and uniform skin tone. Restores fullness to the skin and redefines the volume of the face.

Sublime Double Peel 60 minutes / 2,300 thb

Bestows luminosity and tone. Can be used for mature, thickened and oily skin that shows dyschromia.

Hydrmemory 60 minutes / 2,300 thb

Dehydration and intensive moisturising. Suitable for all skin types.

Active Pureness 60 minutes / 2,300 thb

Ideal for oily or acne skin type. It purifies, regenerates and matifies the skin.

Recover Touch 60 minutes / 2,300 thb

For all skins, and especially those which are depleted, dry, stressed and tired.

Protects the skin against free radical damage. Nourishes, repairs and bestows softness and silkiness. Great for damaged skin from the sun.

Aromatic Firming Facial 90 minutes / 2,800 thb

Restore your skin's natural radiance and enhance its firmness with sweet black tea and phytoplankton.

Aromatic Soothing Facial 60 minutes / 1,900 thb

Treatment helps rejuvenate your skin cells and nourishes balance

Aromatic Brightening Facial 60 minutes / 1,900 thb

A treatment that aims to both diminish dark spots and skin discoloration

Aromatic Purify Facial 60 minutes / 1,900 thb

Deeply purifying and restorative facial incorporates Chinese acupuncture techniques and superior antioxidant treatment.



MOONTREE
elemental spa